

Reinforcement of suction pipe in a intake pump

Work date : November 2014.

500A - Approx. 1.5m Reinforcement, 3 spots to repair



①check the repair site.



②The customer prepared a foothold near the water surface. Confirmed the repair range is 1.5m



③Carry out descaling with a brush or spatula. Uneven rust and corroded spots can be observed.



④ Next to the upper part of the pipe, carry out descaling at the lower part.



⑤First, fill the Magicawrap-Steel over the uneven part



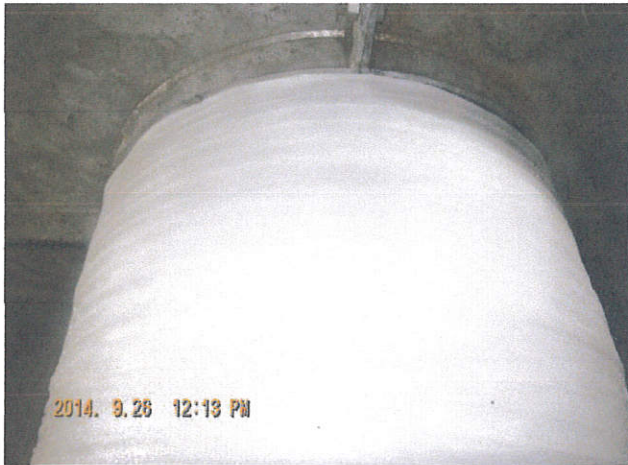
⑥ Then, apply the Magicawrap-seal (two component epoxy resin) to fill it into the slits of the rust.



⑦After the Magicawrap-seal, apply and put the Butyl Roll to fill the uneven surface of the whole pipe.



⑧Covering the whole range of the work area, continue the same work in the lower and upper part. Thus, the surface preparation finished



⑨Then, wrap the Magicawrap for anti-corrosion, protection and reinforcement



⑩Start wrapping the Magicawrap from the upper part downward in 5 layers.



⑪Then, do the same work at the lower part. After the Magicawrap has been wrapped, spray or run water and squeeze at the same direction.



⑫After squeezing the Magicawrap, check the whole condition of the pipe before finishing the work. (do the same work for the other 2 pipes)